

# Somerton Memorial Pavilion

## Brief

10<sup>th</sup> December 2020 – first draft

5<sup>th</sup> January 2021 – Brief Development, initial location sketches and next stages

13<sup>th</sup> April – Brief development, programme and title of document change

orme

architecture for the environment

# Somerton Memorial Pavilion

## Contents

Overview of stakeholder response/ formation of brief  
Brief and Building footprint  
Site Research

orme

architecture for the environment

# Somerton Memorial Pavilion

## Introduction

The purpose of this document is to establish a brief for a new pavilion which will form the centre of Somerton Recreation Ground.

It will account for the various stakeholders' interests and requirements to provide a pavilion which can be used by these stakeholders and the wider community.

Currently the main users of the recreation ground are:

- Snooker Club
- Somerton and District Bowls
- Somerton Rugby Football Club
- Somerton Sports Club
- Somerton Town Football Club
- Somerton Tennis Club

- Childrens' play area
- Skateboard ramps
- Walkers

- Community events
- Arts events

This is separate from the consultations carried out by Swan Paul, informing their masterplan produced in 2019 (image to the right)



3g MUGA pitch for 5-a-side, netball and hockey



Space for marquee, large bouncy castle, events etc



Example trail stopping points with picnic facilities



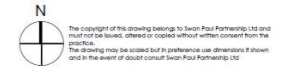
Example trim trail perimeter features



Example perimeter pathway



Outdoor BBQ



- KEY**
- Areas designated for sports pitches for various user groups
  - Areas of grassland set aside for informal play and recreation
  - Proposed tennis court locations with additional court
  - Proposed picnic areas, trees and meadow grass
  - Proposed and existing buildings
  - Area of plastic reinforced grass mesh for the area of temporary parking
  - Areas of existing and proposed vehicular parking spaces (117 spaces excluding short stay and grass reinforced overflow)
  - Area of proposed perimeter pathways nature trails/ meadows with added stop points for exercise and relaxation (client to decide equipment type and location at a later date)
  - Area of existing play park and skateboard facilities (to be improved)
  - Proposed new trees
  - Existing trees

8.08.2019 One new tennis courts rotated 90 deg + additional parking  
 A.04.07.2019 Two new tennis courts rotated 90 deg  
 Revisions

**SWAN PAUL**  
 PARTNERSHIP LTD  
 CHARTERED LANDSCAPE ARCHITECTS

4 Cranfield House, Cattle Street, Tisbury, Wiltshire, SP13 5JG  
 Tel: (01843) 262971  
 Email: info@swanpaul.co.uk  
 www.swanpaul.co.uk

CLIENT: Somerton Recreation Ground Trust  
 PROJECT: Somerton Recreation Ground  
 TITLE: Masterplan 2019

Scale: HTS/BA1 Date: 17/05/19 Drawing: SPP.1943.005 Rev: 8

Fig 01 – Masterplan by Swan Paul in 2019

## Somerton Memorial Pavilion

### Wider requirements – Sport England

Figure 02 shows the ideal pavilion position for commentating, spectating and a scoring perspective as recommended by Sport England. This is specifically for new pavilions in relation to new pitches and therefore existing pitch locations. It also doesn't account for local prevailing wind direction. Figure 03 shows that prevailing wind direction in Somerton is westerly ranging from north-westerly to southerly.

Both factors should be accounted for when considering users of the new pavilion, pitch/court relationship as well as event space relationship with the pavilion.

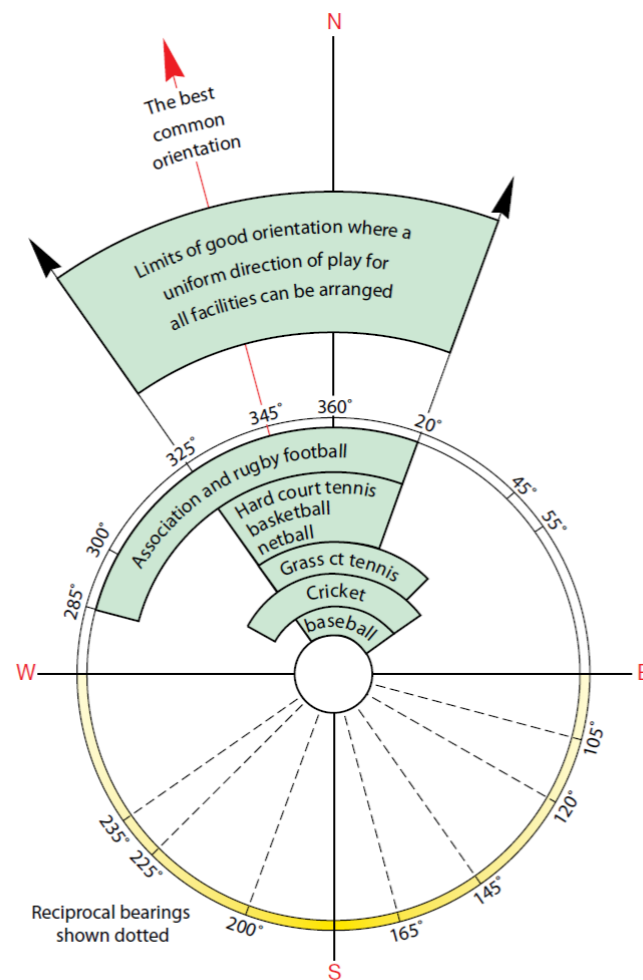


Fig 02 – Sport England guidance on clubhouse design and how the clubhouse should be orientated in relation to the pitch

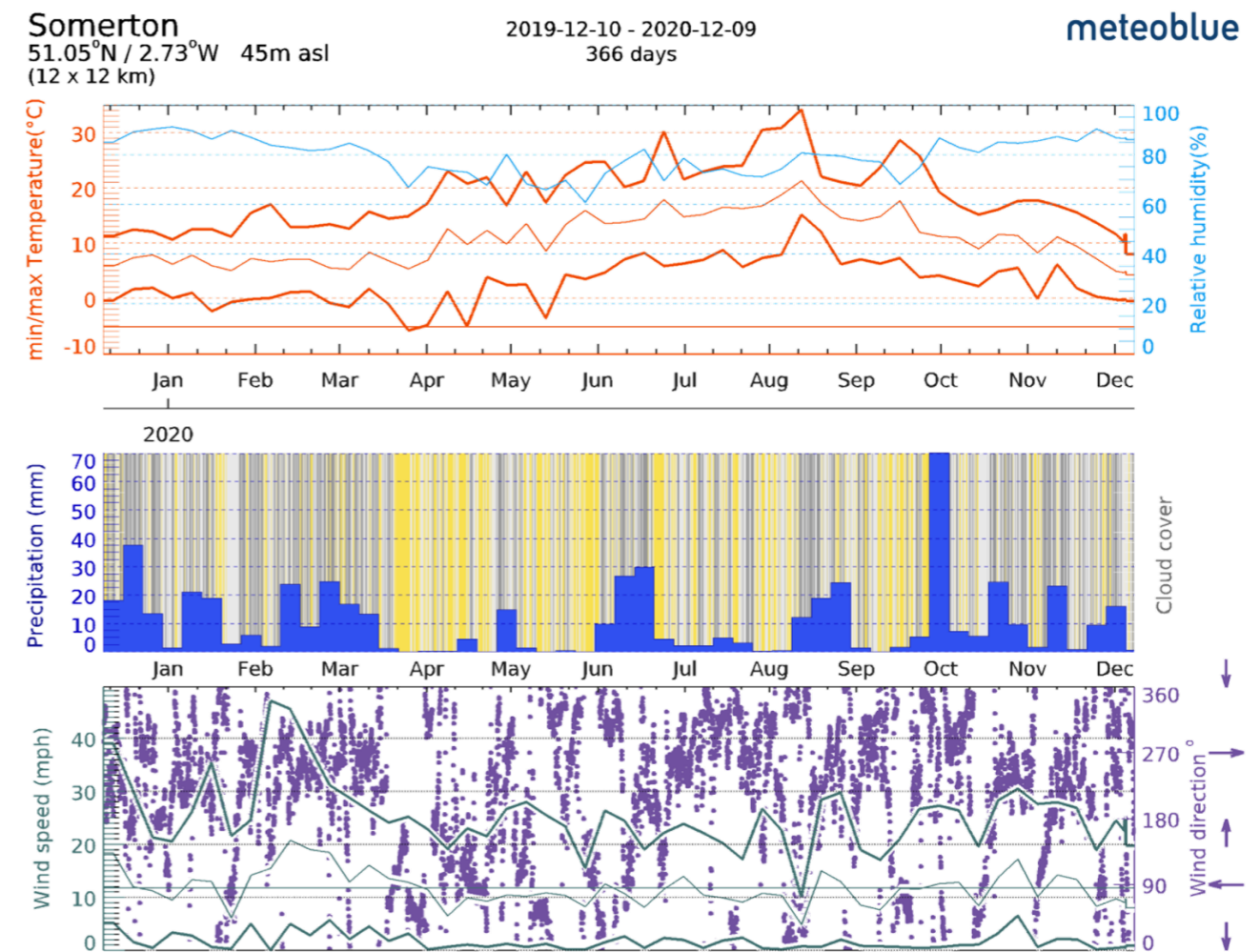


Fig 03 – Indicative climate information over the last 12 months for Somerton. Purple dots in lower graph show typical wind direction – primarily from a westerly direction.

## Somerton Memorial Pavilion

### Wider requirements – Sporting Bodies

Sporting bodies such as the Football Association, Rugby and Tennis will be highly relevant and influence the proposed design. They will hopefully provide a source of funding to assist with design development and ultimately construction of the pavilion. For example if funding is received from the Football Association then adherence with their guidelines will be essential.



*Fig 04 – Aerial image of the recreation ground by Dragonfly Drones*

## Somerton Memorial Pavilion

### Stakeholder requirements

Individual conversations with the chairman (or equivalent) of each of the sports or stakeholders who use the recreation grounds were carried out to understand the current use of the recreation ground and sports club.

The following pages (pages 6 to 11) are a summary of these conversations with the internal space requirements they would likely require in a new pavilion.

Page 12 - the total spaces required by each stakeholder

Page 13 - optimises the spaces with a suggestion of dual-use of spaces to help reduce the overall floor area required. This with SRG Trust approval will begin to inform the design of the new pavilion.

## Somerton Memorial Pavilion

### Somerton Sports Club

#### Current Membership

Adult Members: 400 (membership of individual clubs gives membership to Somerton Sports Club)

- 5 skittles teams (80 members)
- 2 darts teams
- 4 Snooker tables
- Other charities use building – U3A, Slimming group, Probus, walking groups
- Non-members welcome (attendance with member)

Overall members has been stable over last couple of years. Several attempts at trying to increase members.

#### Current Facilities

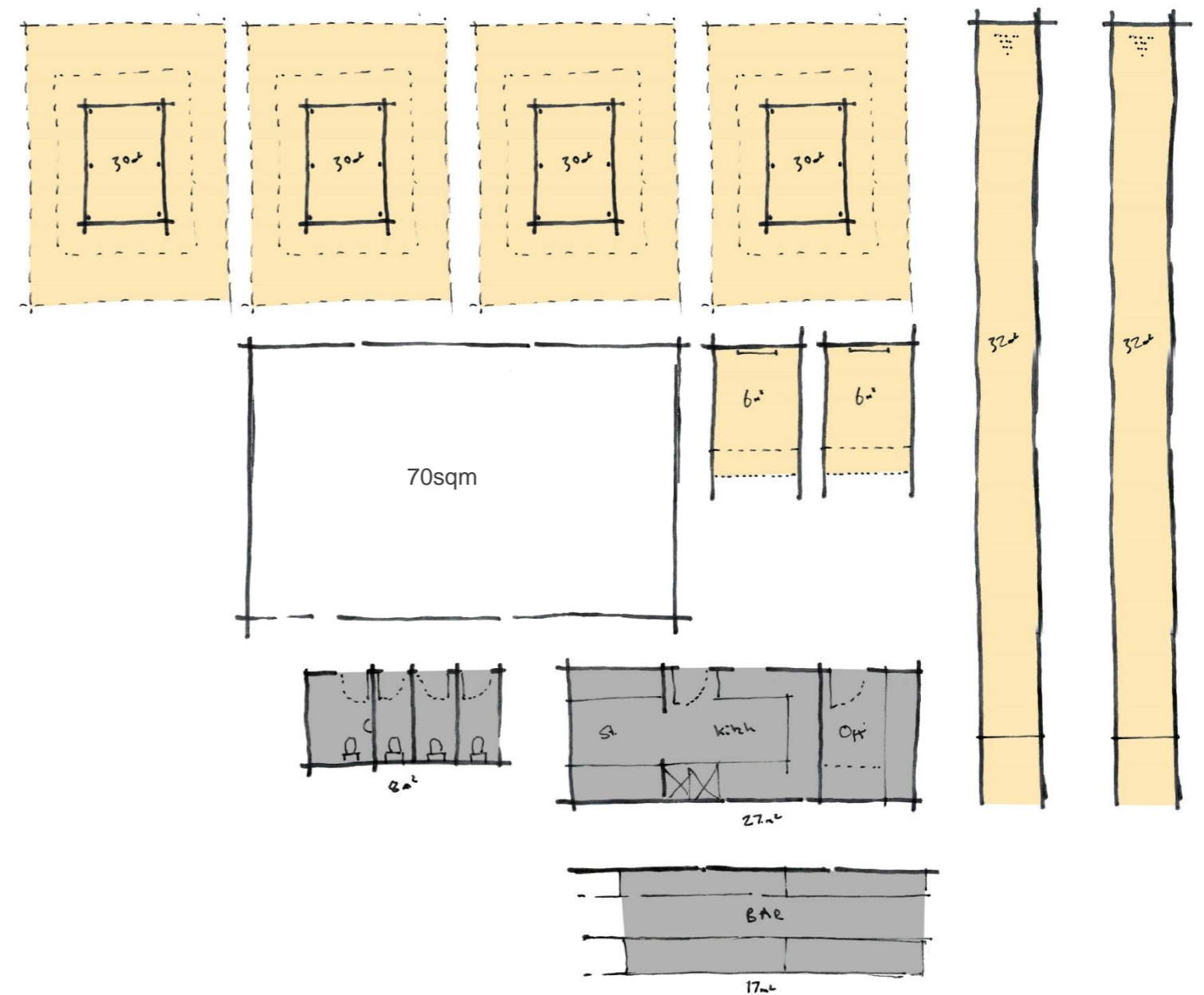
- Main sports bar (football, rugby, skittles)
- Members lounge
- Snooker club – 4nr full sized
- Changing rooms & skittle alley
- Small kitchen
- Small office
- Store room – freezers

#### Future Facilities

- More welcoming as a building for younger users as well as wider community
- Coffee shop/ bistro – for spectators as well as members

#### Any other comments

- New Pavilion not only for sports people – provision for the wider community.
- Gym – affordable and for the community
- Snooker takes up a lot of space but low-income generator
- Historically cricket has been on-site – not in recent years
- Rounders been played, little interest in using building



## Somerton Memorial Pavilion

### Somerton and District Bowls Club

#### Current Membership

Adult Members: 50-60

Adult Matches: 1-2 week during the season in 4 different local leagues

Training/ Matches: most members play 3 times a week

Affiliations: Somerset Bowls, England Lawn Bowls Association

#### Future Membership

Member increase: Stable

Team increase/ prospects: Remain consistent

#### Current Facilities

- Pavilion – tea and cake, comfortably sits 32 people. No heating. Water, electric and sewage disposal
- Toilets
- Changing rooms – for changing shoes and storage (rather than change of kit)
- Storage for kit
- Lawnmower store
- Invested in the lawn - volunteer upkeep, no lighting
- Invested in improving accessibility and security

#### Future Facilities

- Pavilion extension underway to provide glazed viewing area
- Improved changing/ store area

#### Any other comments

- SRG Trust do well at encouraging other uses – fireworks, arts. Free unless you participate. Parking is an issue -sometimes overflow parking/ problematic
- Recreation ground is for the whole of Somerton – gradually becoming more split up rather than generally for the people Somerton. Leases in place for these separate land.
- Snooker club (over 100yrs old) and skittles shouldn't be lost in any new pavilion

*Assumed existing building retained, therefore space analysis not required*



## Somerton Memorial Pavilion

### Somerton Rugby Football Club

#### Current Membership

Adult Members: 65 (over 18s). Past members community includes 100. Some U18s attend training. Pay per play basis

Adult Teams: 2 senior teams

Junior Members: 40 (aged 4-8)

Training/ Matches:

- Training nights max 40, average 30
- Matches on a Saturday

Affiliations: Rugby Football Union,

#### Future Membership

Member increase: U18s training

Team increase/ prospects: U18s teams, Ladies team, Junior girls team

Aspirations: increase participation and improve club positions in overall league.

Improve facilities for members

#### Current Facilities

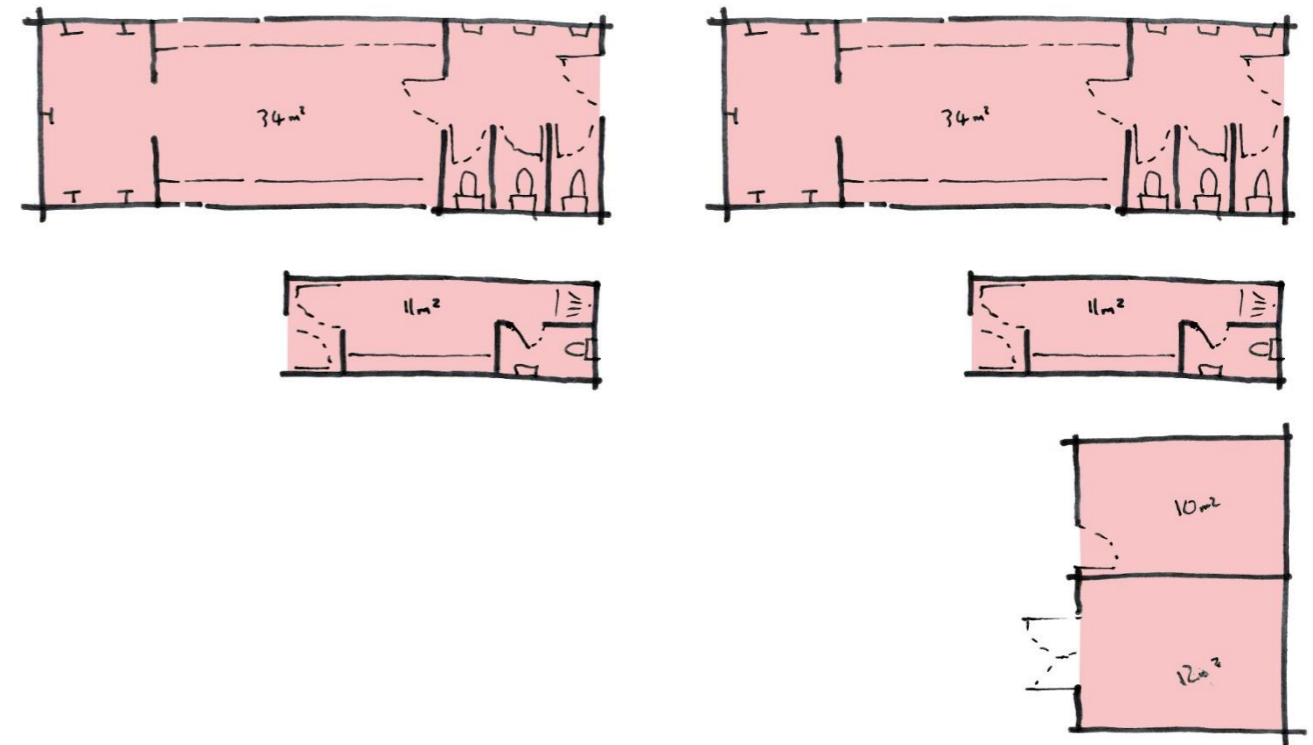
- 1nr good pitch with floodlights, imported soil for better play. Spectator barrier.
- 1nr container for storing kit, training equipment, first aid, refreshments
- Generator for lighting
- Access and use of changing rooms (in container) – however too small for RFU use

#### Future Facilities

- Bigger changing rooms – compliant with RFU
- Separate Junior/ Girls changing
- Space for their use
- Prefer catering over gym space
- New pavilion for supporters as well as players – drink (hot or cold) and food
- Toilet facilities for players as well as supporters
- Proximity of new pavilion to pitch is key

#### Any other comments

- Pavilion could act as a hub for the community, supportive of other events (as well as sports)
- Never going to replace a pub – but more like a village hall.



Sizes based on RFU guidelines for changing rooms/  
building provision

## Somerton Memorial Pavilion

### Somerton Town Football Club

#### Current Membership

Adult Members: 55-60 (5-6-a-side use MUGA)

Adult Teams: 3

Junior Members: 150

Junior Teams: 9 teams U16

Other Teams: Veteran 11-a-side team (with 5 subs)

Training/ Matches:

- Evenings throughout the summer
- MUGA throughout winter – but cannot hold number of players required
- MUGA used by each junior teams throughout winter

Affiliations: Somerset County FA and The Football Association

#### Future Membership

Member increase: likely (adults and juniors) and likely to have U18s team

Team increase/ prospects: would be great to have a team that supports juniors converting into senior teams.

Aspirations: increase participation and improve club positions in overall league

#### Current Facilities

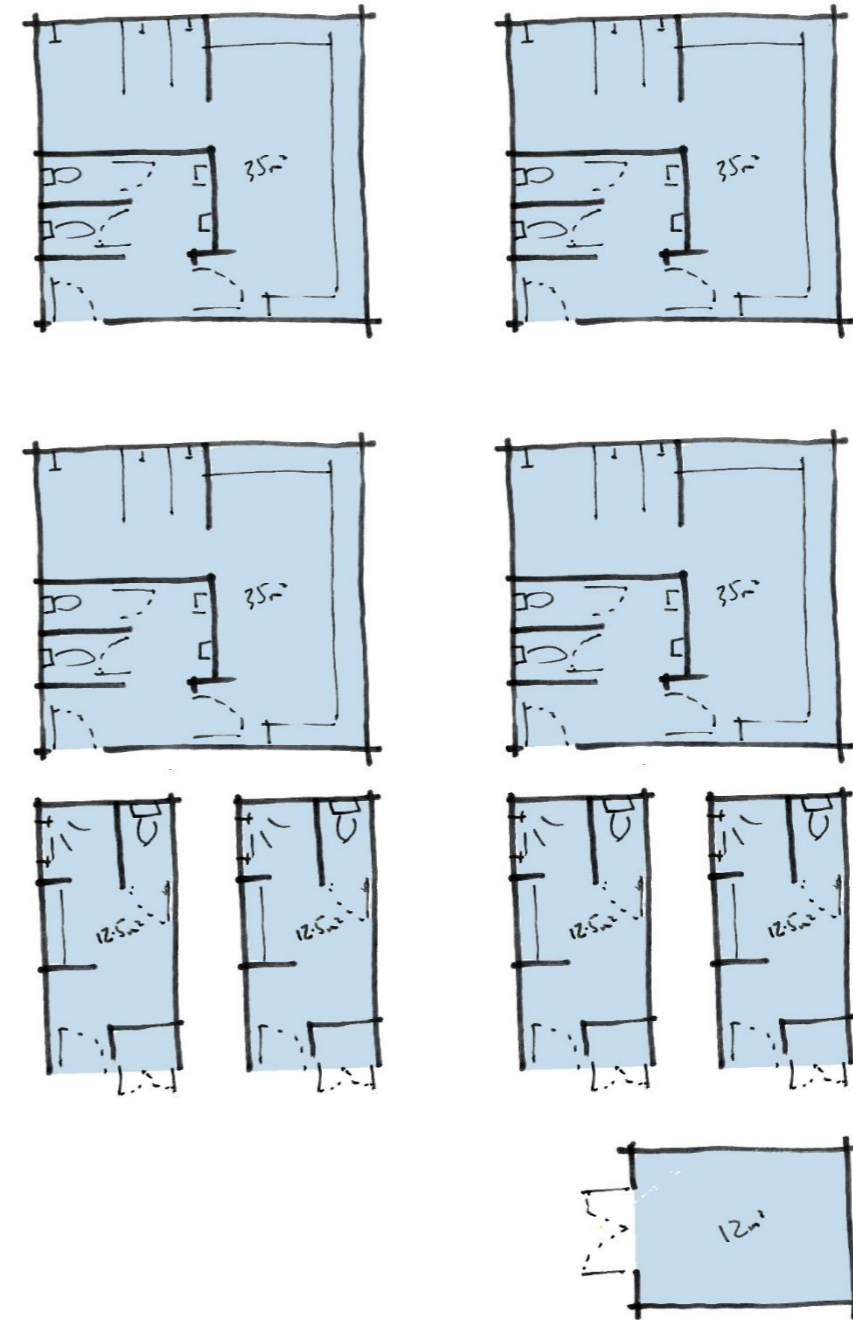
- Specific criteria for pitches – fence recently installed
- 2nr changing rooms as part of sports club
- 4nr changing rooms in containers (shared with Rugby)
- 3 full sized adult pitches (Excludes Rugby)
- 9v9 youth pitch
- Various smaller sized pitches
- Funding recently invested in 3G pitch, tractor/mower, pitch maintenance, new benches and redecoration of changing rooms and dug-out.

#### Future Facilities

- Specific criteria if promoted – including pitch relation to changing rooms, toilet facilities and signage.
- Changing room separation required between youth and senior
- Changing facilities standard is currently low
- Increased size of MUGA
- Accessible Bar
- End of year do/ awards

#### Any other comments

- Funding is likely through The Football Foundation



Sizes based on Football Foundation guidelines for changing rooms

## Somerton Memorial Pavilion

### Somerton Tennis Club

#### Current Membership

Adult Members: 90 (50% Male, 50% Female) which includes 10nr in 18-25 category

Junior Members: 20

Training/ Matches:

- Monday – Men's night
- Wednesday – Mixed night
- Thursday – Ladies night
- Various other groups in the day
- League season – winter Saturday/ Sunday matches
- Monday & Friday evenings in summer

Affiliations: South Somerset Tennis Group, Somerset Lawn Tennis Association and National Lawn Tennis Association.

#### Future Membership

Member increase: limited by available court

#### Current Facilities

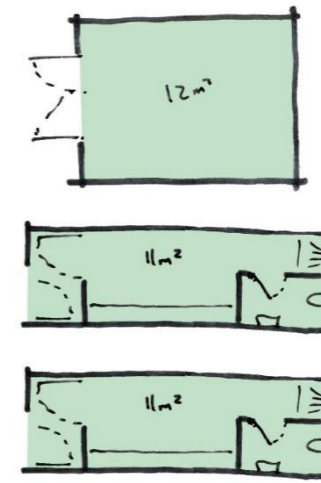
- 2 courts illuminated
- 1 junior court (light overspill from full sized courts)
- Clubhouse – cupboard for storage, lighting controls, ball machine, table, chairs, sink fridge & microwave
- Toilets used in Social club
- Car parking sufficient currently
- No shower/ changing – social club closed when use required

#### Future Facilities

- Showers/ changing
- Bar and social facilities
- Minority may be interest in gym
- Tennis club quiz- monthly
- Potential for clubhouse to be part of pavilion
- A 3<sup>rd</sup> court is paramount for the continued use and growth of the tennis club

#### Any other comments

- Courts need resurfacing, postponing until decision made on position of tennis club in recreation ground
- Grants and loans available for 3<sup>rd</sup> court

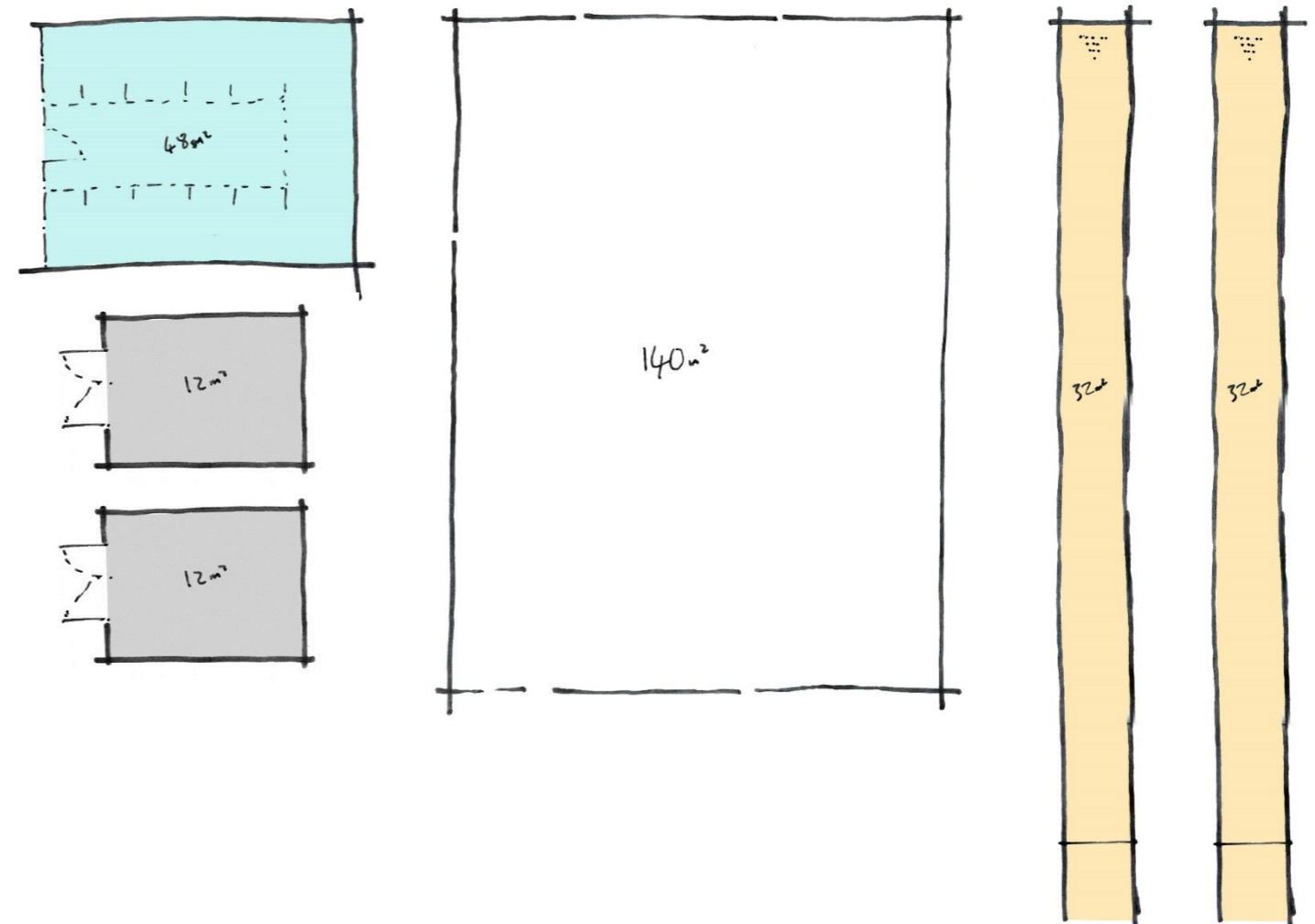


## Somerton Memorial Pavilion

### Other observations/ requirements

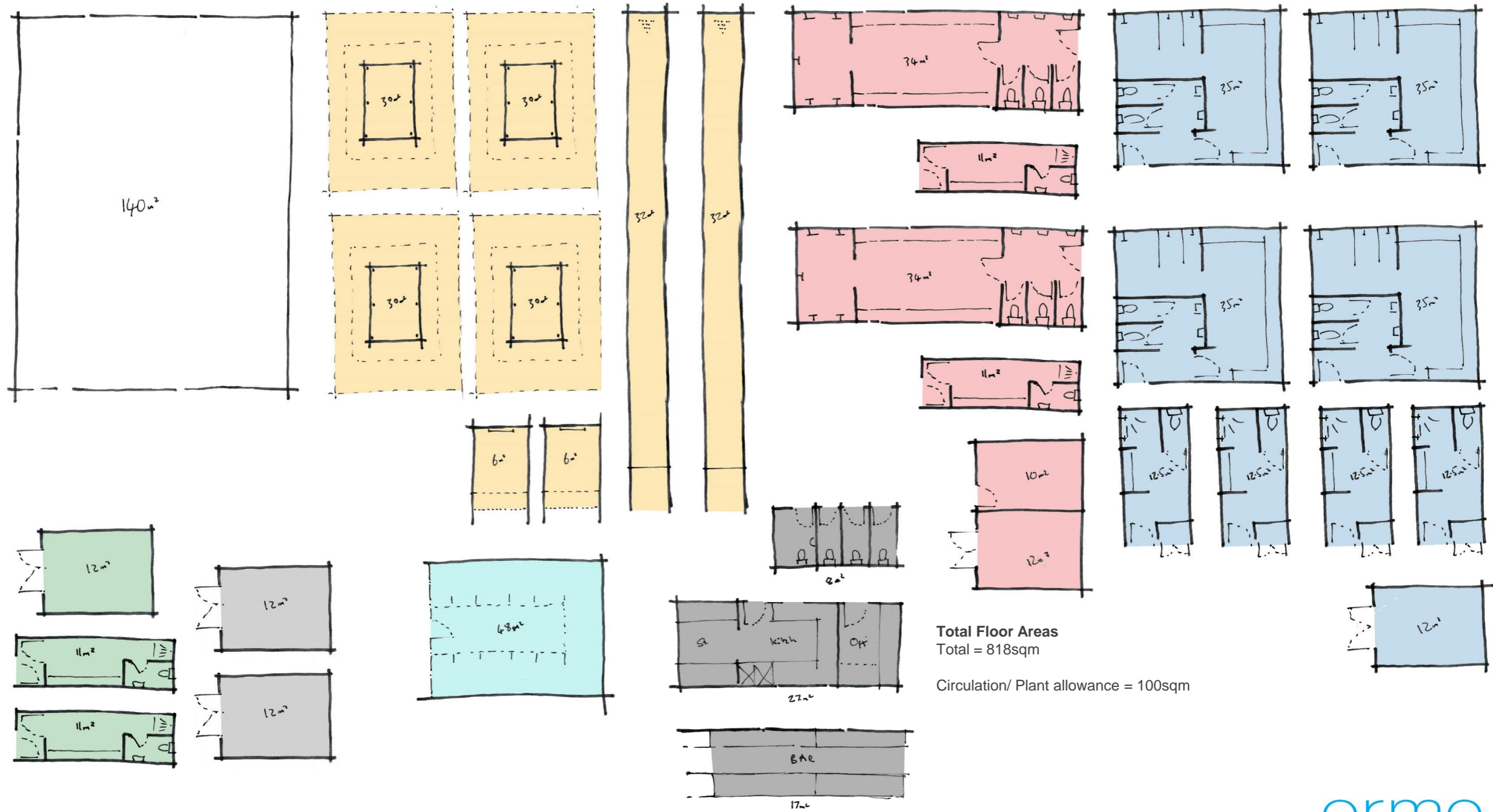
Through conversations with key stakeholders, other potential requirements for the new pavilion, which aren't specific to the key stakeholders that were consulted with include:

- Other events – should be supported in the creation of a new pavilion. These may include AGM's, functions, parties, conferences,
- Skittle alley – ideally one permanent and one temporary so that two games can be held at once.
- Lack of facilities in Somerton to cater for parties of 100-200 people without the venue feeling too big
- Accessible/ affordable Gym for use by the sports clubs and residents of Somerton
- Snooker tables to be accommodated if existing sports club demolished
- Storage for mowers/ tractor to be considered with pavilions position



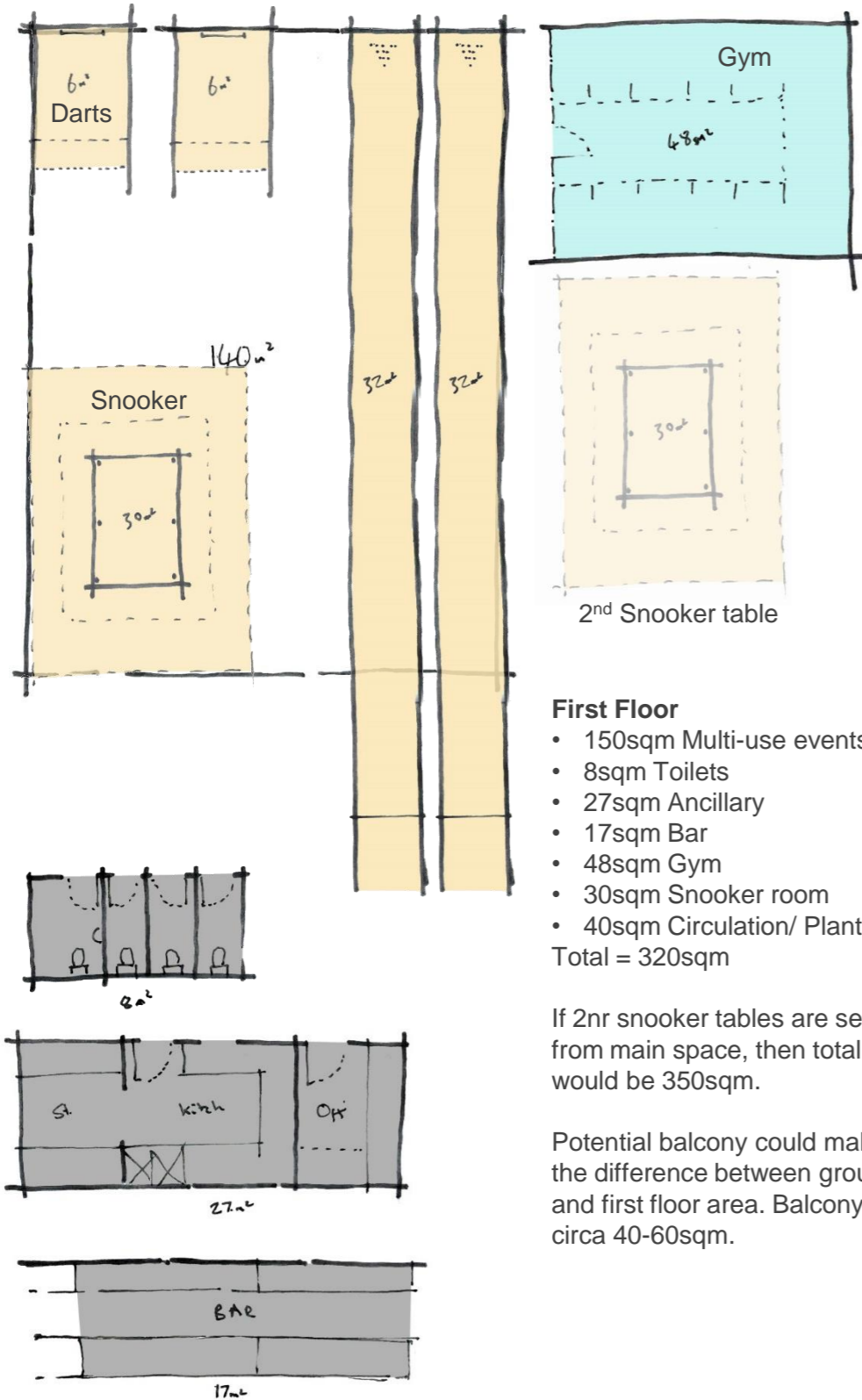
# Somerton Memorial Pavilion

## Total Areas



# Somerton Memorial Pavilion

## Total Areas - Optimised



### First Floor

- 150sqm Multi-use events space
  - 8sqm Toilets
  - 27sqm Ancillary
  - 17sqm Bar
  - 48sqm Gym
  - 30sqm Snooker room
  - 40sqm Circulation/ Plant
- Total = 320sqm

If 2nr snooker tables are separate from main space, then total area would be 350sqm.

Potential balcony could make up the difference between ground floor and first floor area. Balcony size circa 40-60sqm.

### Ground Floor

- 68sqm 2nr Rugby Changing
  - 22sqm 2nr small Rugby changing
  - 140sqm 4nr Football changing
  - 25sqm 2nr small Football changing
  - 22sqm 2nr small changing room - multiuse
  - 12sqm Rugby Store
  - 12sqm Tennis store
  - 12sqm Football store
  - 10sqm first aid/ physio room
  - 24sqm 2nr general groundsman store
  - 40sqm Circulation/ Plant
- Total = 387sqm

There is some scope for store-rooms and first-aid room to be located at first floor



# Somerton Memorial Pavilion

## Site Research

Services and local plan for reference purposes and to help inform the design of the pavilion during concept and design development stages

# Somerton Memorial Pavilion

## Public Rights of Way and Flooding

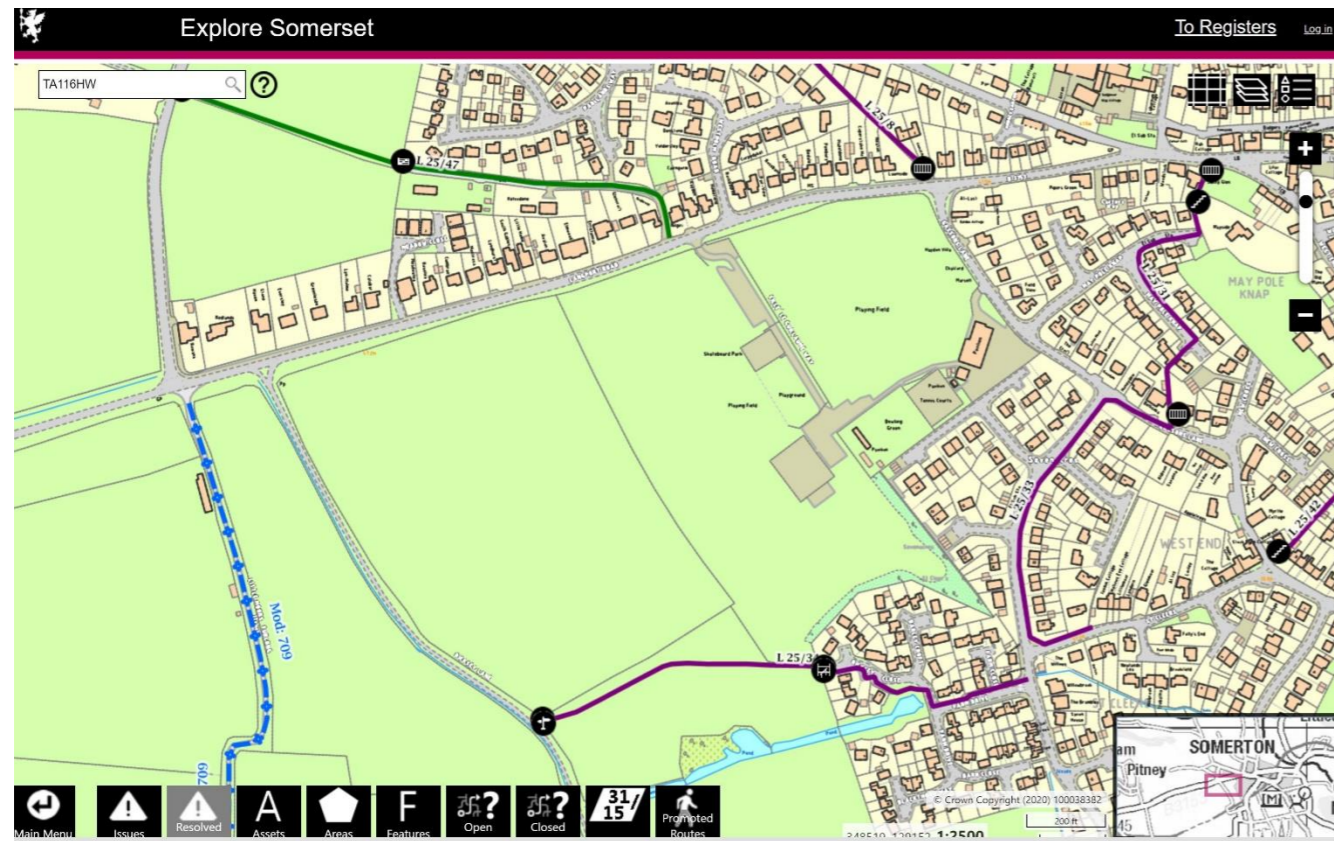


Fig 05 – Public rights of way adjacent to Somerton Recreation Ground

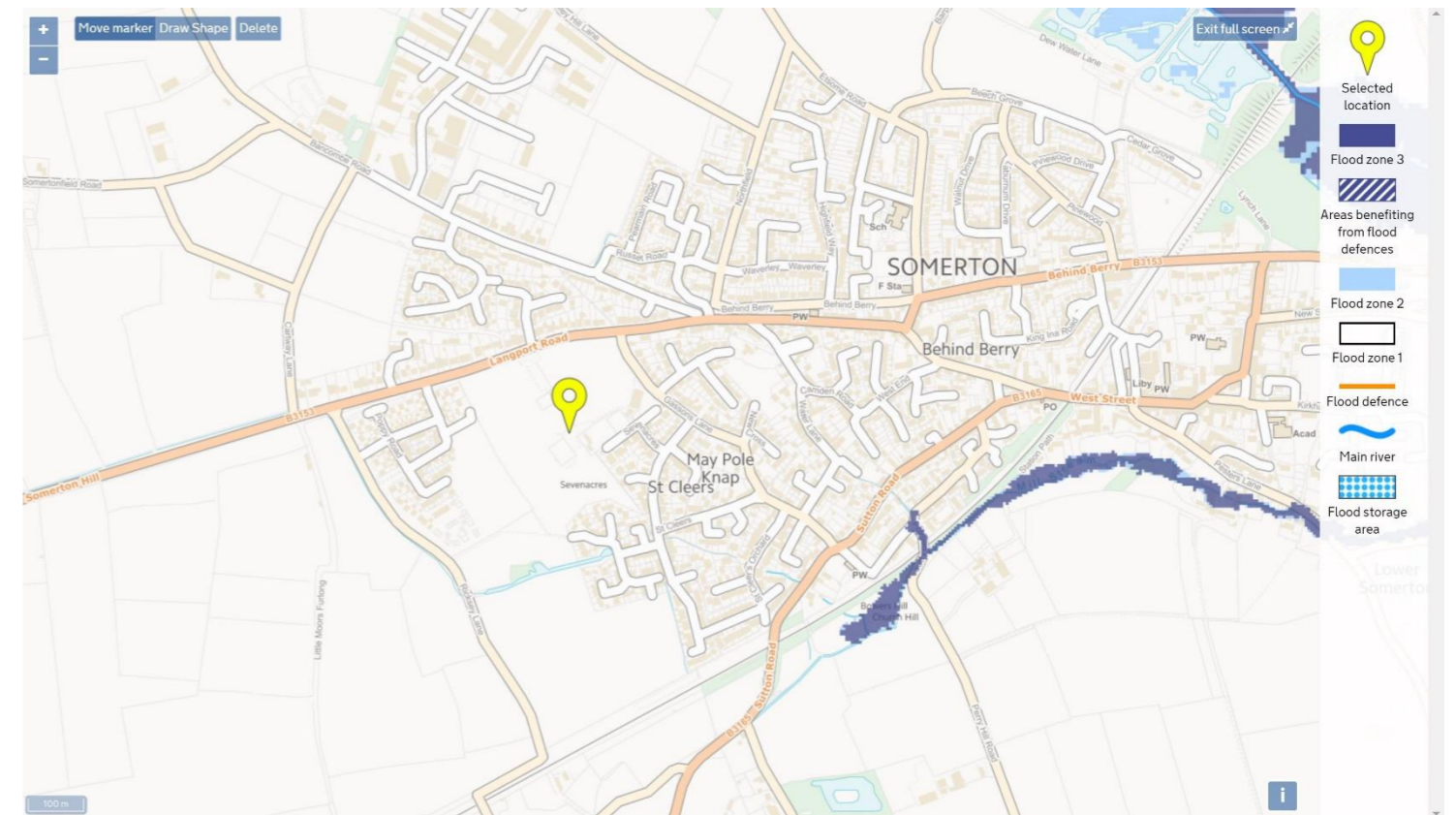


Fig 06 – Local flooding map – no risk of Flooding within the site according to the environment Agency database



## Somerton Memorial Pavilion

### Listed Buildings and SSDC Local Plan

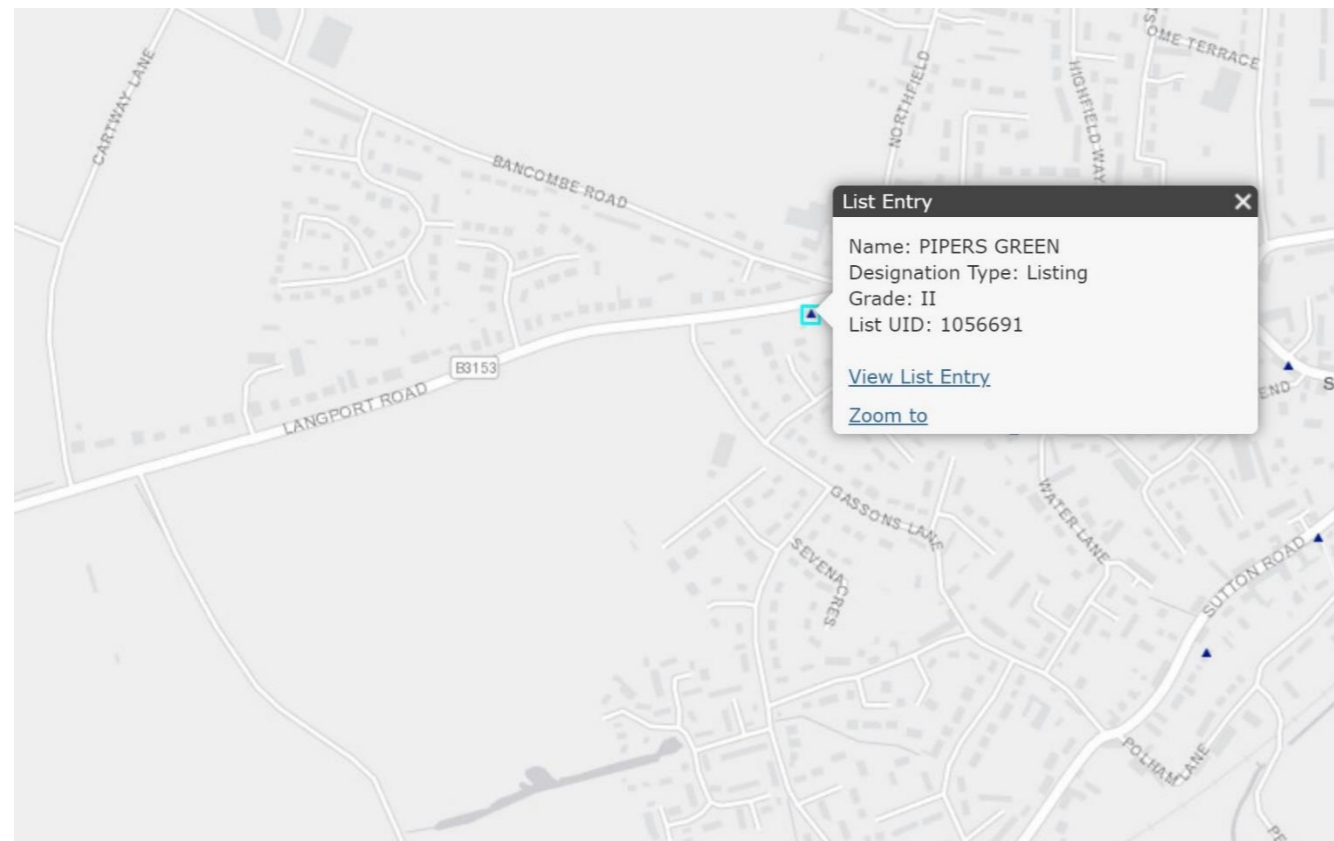


Fig 07 – One listed building in relative close proximity to the site, but little visual impact between the grounds and the listed building

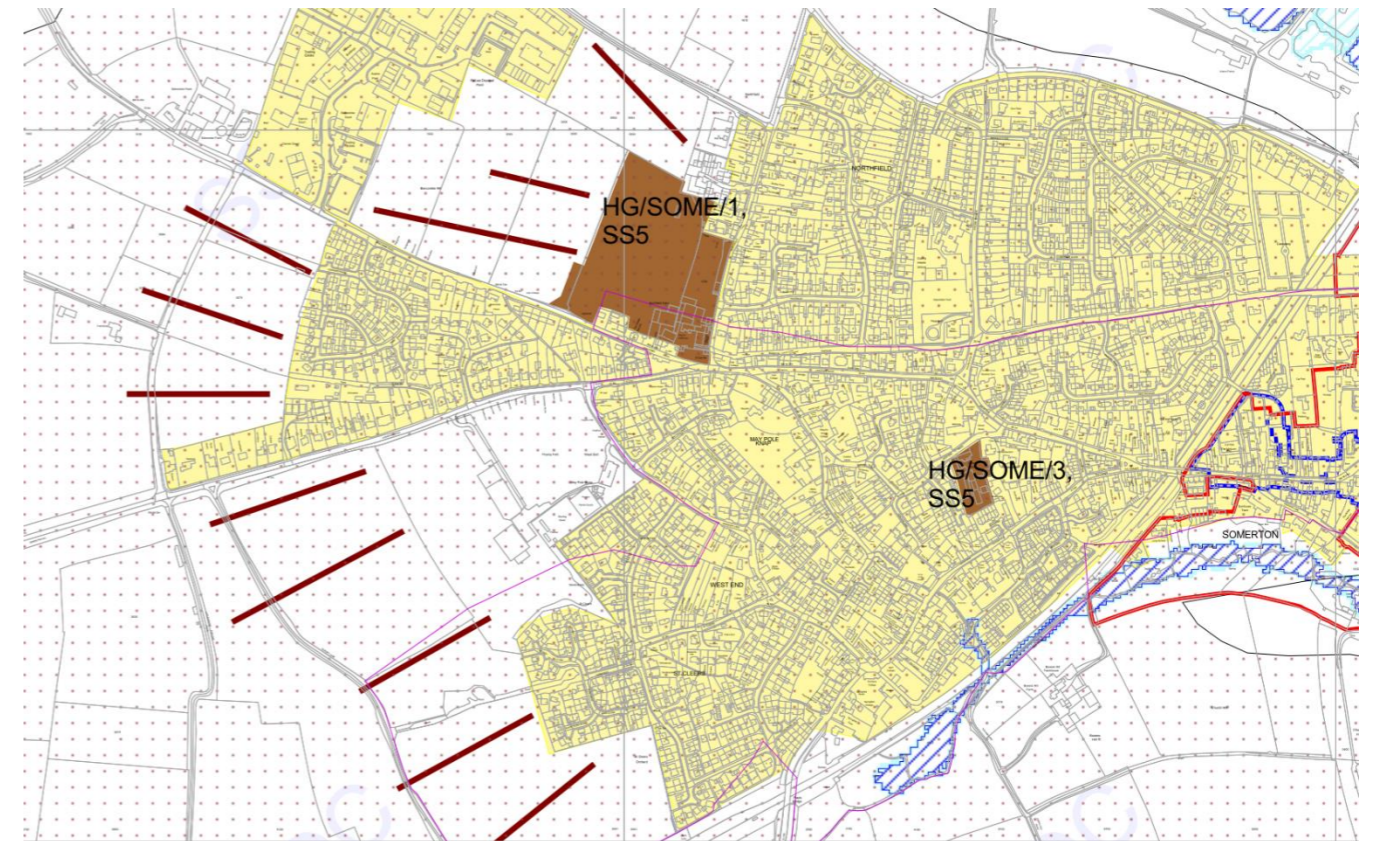


Fig 08 – SSDC local plan. Impacts on recreation ground:

- Outside of Conservation Area (red boundary)
- Area of High Archaeological potential to the south of the site (pink boundary)
- Outside of Development area (yellow hatch)

# Somerton Memorial Pavilion

## Electrical and Gas networks

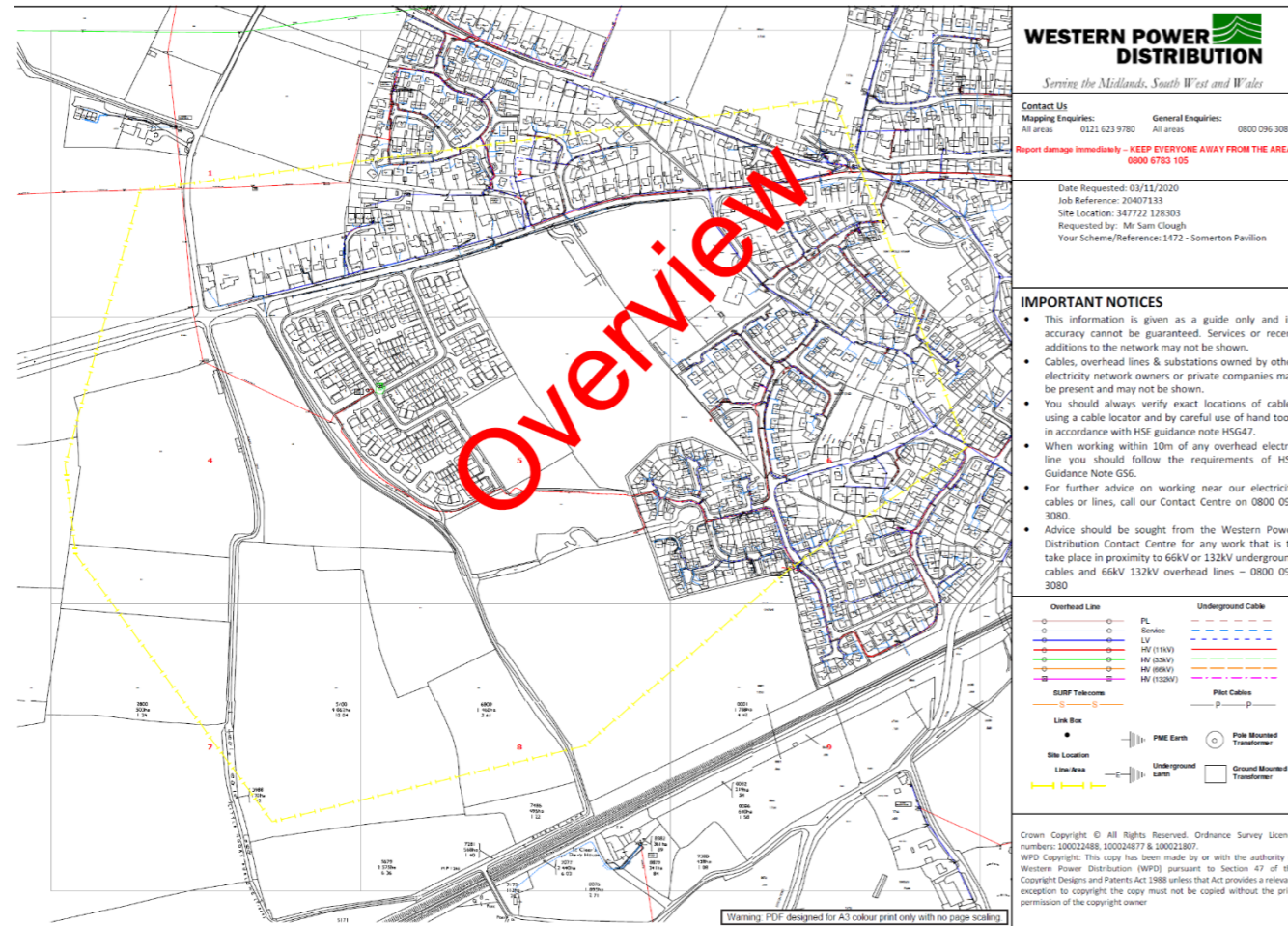


Fig 09 – Electrical services – minimal obstructions on-site

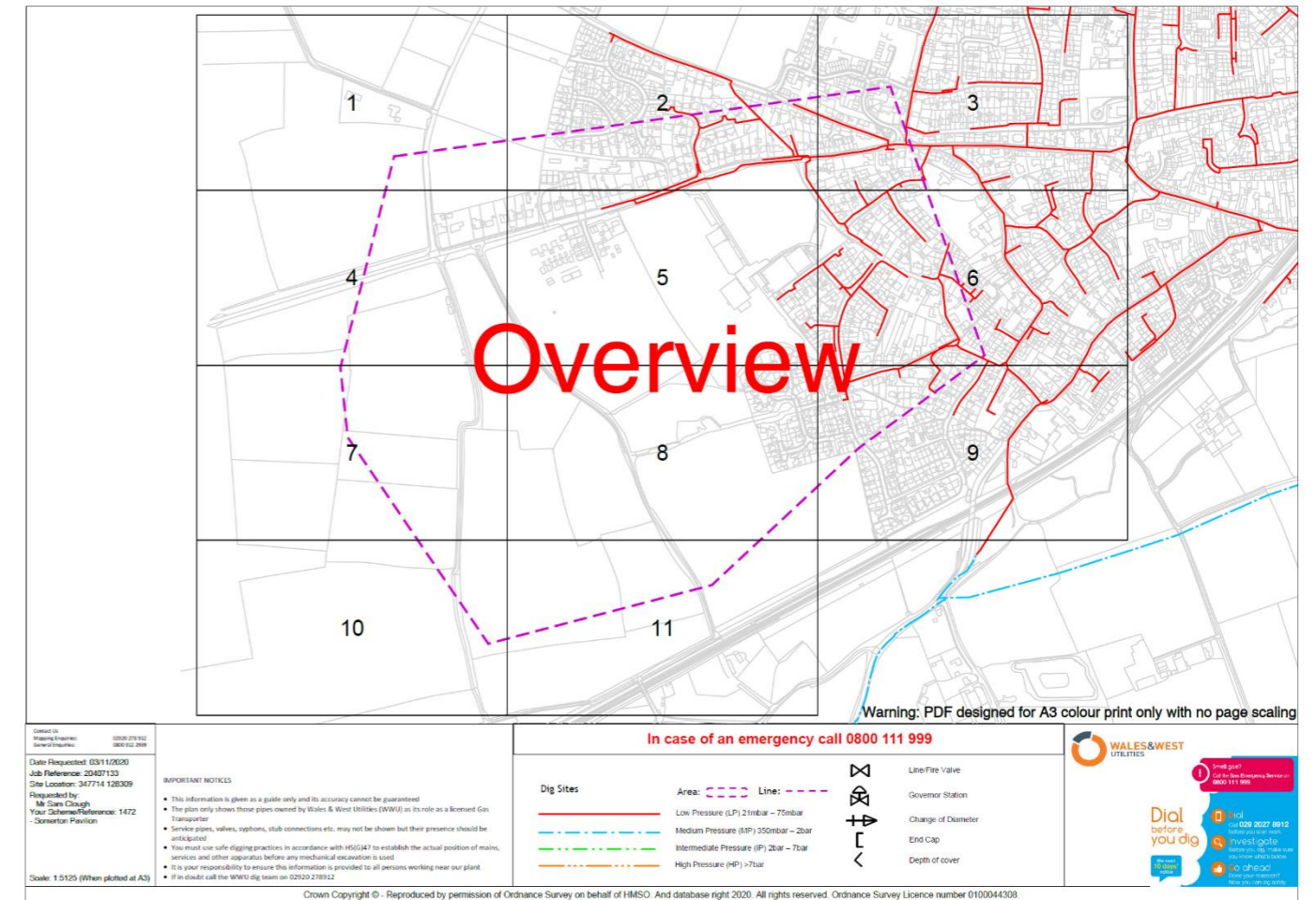


Fig 10 – Gas services – minimal obstructions on-site

